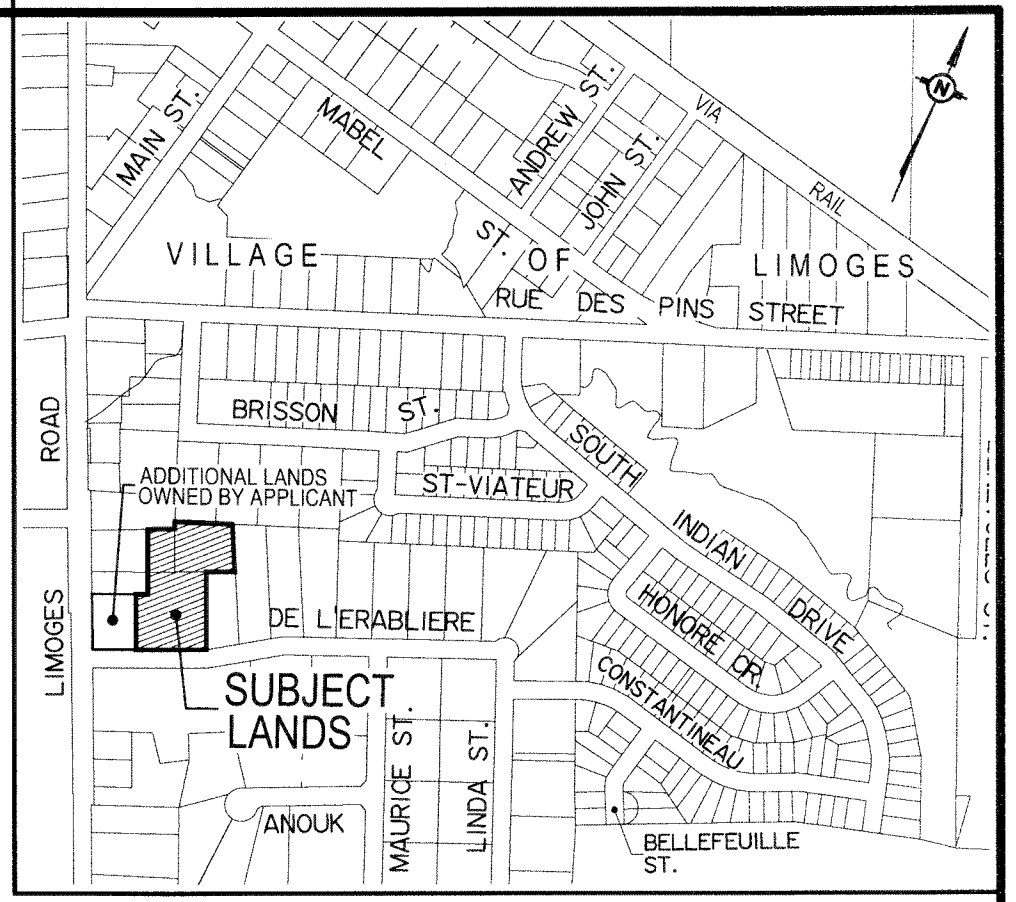
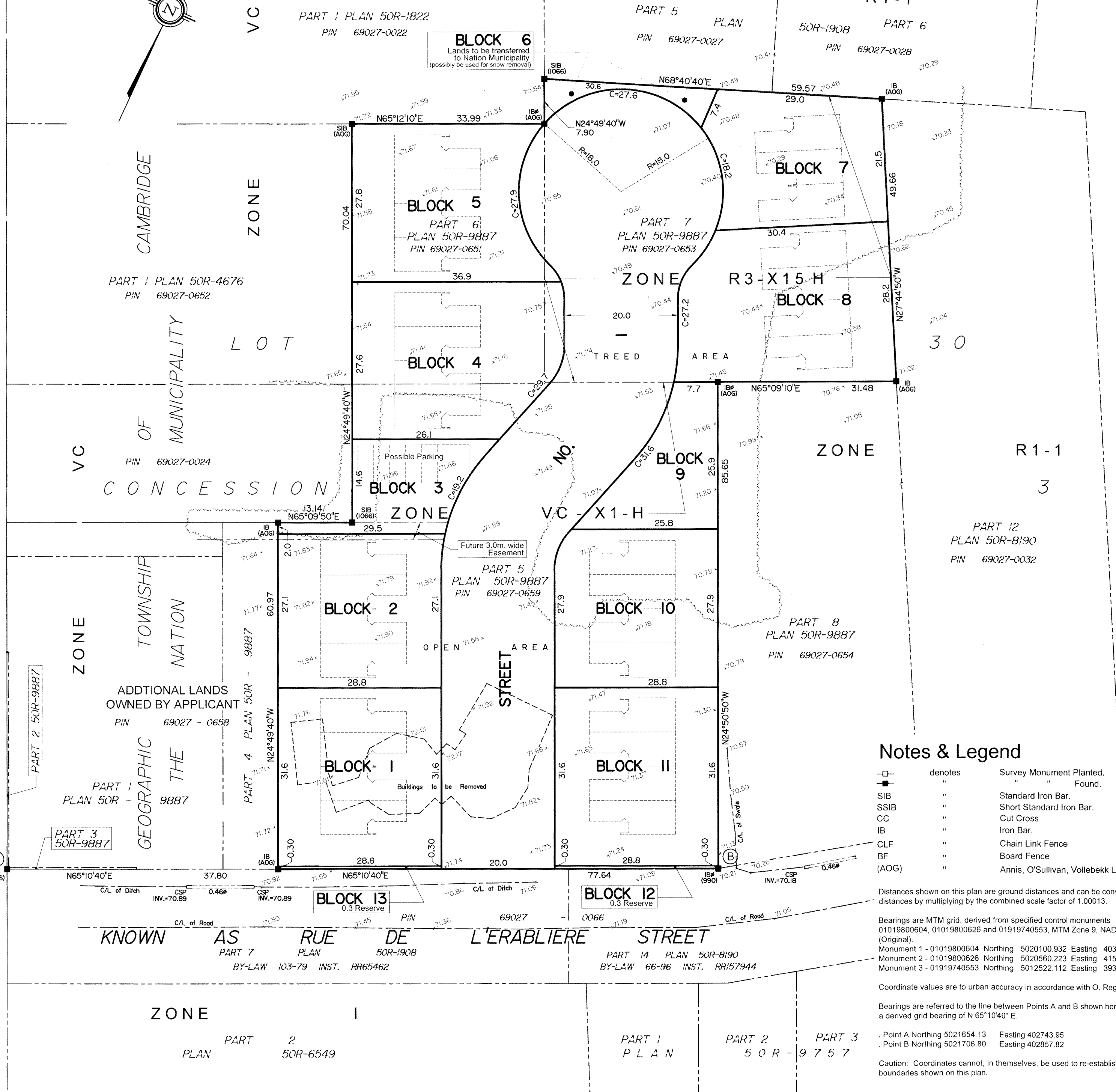
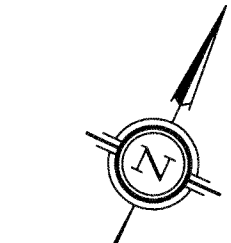


ROAD ALLOWANCE BETWEEN GEOGRAPHIC TOWNSHIP OF CAMBRIDGE (THE NATION MUNICIPALITY) AND THE TOWNSHIP OF RUSSELL
 COUNTY ROAD No. 5 KNOWN AS LIMOGES ROAD



KEY MAP
 NOT TO SCALE

DRAFT PLAN OF SUBDIVISION OF
 PART OF LOT 30
 CONCESSION 3
 (Geographic Township of Cambridge)
 THE NATION MUNICIPALITY
 COUNTY OF RUSSELL
 Prepared by Annis, O'Sullivan, Vollebek Ltd.

Scale 1 : 500

Metric
 DISTANCES SHOWN ON THIS PLAN ARE IN METRES AND
 CAN BE CONVERTED TO FEET BY DIVIDING BY 0.3048

SURVEYOR'S CERTIFICATE
 I CERTIFY THAT:
 The boundaries of the lands to be subdivided and their relationship to adjoining lands have been accurately and correctly shown.

Sept 30, 2015
 Date

[Signature]
 DAN R. VOLLEBEKK
 ONTARIO LAND SURVEYOR

OWNER'S CERTIFICATE
 I CERTIFY THAT:
 I am the owner of the lands to be subdivided and that this plan was prepared in accordance with my instructions.

Sept 30, 2015
 Date

[Signature]
 JULIE LACHOIX, PRESIDENT
 I HAVE THE AUTHORITY TO BIND THE CORPORATION

Notes & Legend

□	denotes	Survey Monument Planted.
■	"	Found.
SIB	"	Standard Iron Bar.
SSIB	"	Short Standard Iron Bar.
CC	"	Cut Cross.
IB	"	Iron Bar.
CLF	"	Chain Link Fence
BF	"	Board Fence
(AOG)	"	Annis, O'Sullivan, Vollebek Ltd.

Distances shown on this plan are ground distances and can be converted to grid distances by multiplying by the combined scale factor of 1.00013.

Bearings are MTM grid, derived from specified control monuments 01019800604, 01019800626 and 01919740553, MTM Zone 9, NAD-83 (Original).

Monument 1 - 01019800604 Northing 5020100.932 Easting 403411.048
 Monument 2 - 01019800626 Northing 5020560.223 Easting 415315.091
 Monument 3 - 01919740553 Northing 5012522.112 Easting 393256.224

Coordinate values are to urban accuracy in accordance with O. Reg. 216/10.

Bearings are referred to the line between Points A and B shown hereon to have a derived grid bearing of N 65°10'40" E.

Point A Northing 5021654.13 Easting 402743.95
 Point B Northing 5021706.80 Easting 402857.82

Caution: Coordinates cannot, in themselves, be used to re-establish corners or boundaries shown on this plan.

ADDITIONAL INFORMATION REQUIRED UNDER SECTION 51-17 OF THE PLANNING ACT

- A. see plan (boundaries)
- B. see plan (highways)
- C. see plan (key plan)
- D. Townhouses (purpose for which lots are to be created)
- E. see plan (adjoining lands)
- F. see plan
- G. see plan (features)
- H. Municipal Water System Available
- I. see hydrogeological report and natural environment report
- J. see plan (elevations)
- K. Municipal services available or to be available (hydro, telephone, cable)
- L. see plan (easements)

ANNIS, O'SULLIVAN, VOLLEBEKK LTD.
 P.O. Box 579, 225 rue Industriel
 Embrun, (Ontario), K0A 1W0
 Phone: (613) 443-3364 / Fax: (613) 443-3229
 Email: Embrun@aovltd.com

Ontario
 Land Surveyors Job No. E-7178-15 CP